

Impact Investment in Noile-Immune Biotech, Inc.

- Extending Healthy Life Expectancy through Development and Provision of Next-Generation Cancer Immunotherapy –

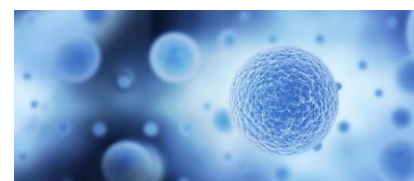
The Dai-ichi Life Insurance Company, Limited (the “Company”; President and Representative Director: Seiji Inagaki) has impact invested JPY 500 million in Noile-Immune Biotech, Inc. (“Noile-Immune”; President & CEO: Koji Tamada), a Japanese startup that develops innovative cancer immunotherapy. This impact investment is a part of the Company's ESG investments.¹



Noile-Immune Biotech

- A startup that develops new drugs focusing mainly on CAR-T cell therapy² which, among cancer therapies, has been attracting keen attention as the next generation of cancer therapy
- As a therapy for hematological cancers such as leukemia, CAR-T cell therapy has seen advanced development, and while it has demonstrated significant therapeutic effects, it has not been established as a therapy for solid tumors

- An original technology developed by Noile-Immune (PRIME technology) improves the efficacy of CAR-T cell therapy for solid tumors, and provides a new therapeutic approach to cancer patients



Social Impact

Extends the healthy life expectancy of cancer patients

Realizes an extension of the healthy life expectancy of cancer patients through the development and provision of safe and effective next-generation cancer immunotherapy for solid tumors



Through this investment, the Company not only expects a high level of returns, but will provide capital support for Noile-Immune's initiatives, which are expected to extend the healthy life expectancy of cancer patients (social impact). Further, the Company will continuously monitor the progress of these initiatives.

As a responsible institutional investor, the Company is actively engaged in ESG investment to contribute to realizing a sustainable society as well as to improve its investment return through sophisticated and diverse investment methods.

¹Impact investment is an investment method where Dai-ichi Life makes investment decisions with the intent to gain investment returns and generate social impact (e.g., structural change in society).

² CAR-T cells are cells that are generated by gene transduction technology. They possess the ability to find and attack cancer cells with high specificity and potency. CAR-T cell therapy was developed as a therapy for hematological cancers, and received pharmaceutical approval in Japan in March 2019.

Noile-Immune Biotech, Inc. President & CEO Koji Tamada made the following remarks:



Currently, 1 in 2 people in Japan is diagnosed with cancer, and 1 of every 3 to 4 people dies of cancer. While many new drugs are being created through advancements in medicine, there are still few safe and highly effective therapeutic medications for advanced stage cancer, making the development of revolutionary cancer treatments an extremely important social task. Noile-Immune Biotech is advancing research and development with a particular focus on a cutting-edge treatment known as CAR-T cell therapy, a cancer immunotherapy that has been attracting keen attention in recent years. Our originally developed PRIME technology is an innovative technology that may be able to further upgrade CAR-T cell therapy, which to this point has mainly been confirmed to have therapeutic effects for hematological cancers, and improve it such that it can demonstrate therapeutic effects for solid tumors, which account for over 90% of cancers. Moving forward, we will develop a pipeline for CAR-T cell therapy utilizing PRIME technology and aim to grow as a company that, through the business of creating novel therapeutic medications for cancer, proactively works toward the realization of an abundant, healthy society.

Company Outline

| | |
|-----------------------------|---|
| Trade Name | Noile-Immune Biotech, Inc. |
| Head Office | T&G Hamamatsu-Cho Building 5F, 2-12-10 Shiba-Daimon, Minato-ku, Tokyo |
| Representative | Koji Tamada, President & CEO |
| Established | April 2015 |
| Business Description | Explore innovative cancer immunotherapy based on CAR-T cell Therapy |

Dai-ichi Life's Impact Investment History

| Headline | Release Date | URL |
|--|---------------|---|
| Dai-ichi Life to Engage in Impact Investment - First Impact Investment in Gojo & Company, Inc. which provides support for microfinance business - | Oct. 23, 2017 | https://www.dai-ichi-life.co.jp/english/news_release/2017/pdf/index_012.pdf |
| Dai-ichi Life to Invest in Spiber Inc. - Second Impact Investment through Support for Development of New-Generation Bio-Materials - | Oct. 23, 2017 | https://www.dai-ichi-life.co.jp/company/news/pdf/2017_044.pdf |
| Dai-ichi Life to Invest in CureApp, Inc. - Third Impact Investment through Support for Treatment Applications - | Feb. 26, 2018 | https://www.dai-ichi-life.co.jp/english/news_release/2017/pdf/index_018.pdf |
| Dai-ichi Life to Impact Invest in CROWD CREDIT, Inc. - Energize Business Activities in Developing Countries to Alleviate the Global Supply-Demand Gap for Funds - | Apr. 5, 2018 | https://www.dai-ichi-life.co.jp/company/news/pdf/2018_002.pdf |
| Dai-ichi Life to Impact Invest in SUSMED, Inc. - Promote the Widespread Adoption of Non-Drug Therapies through Insomnia Therapy Apps - | June 4, 2018 | https://www.dai-ichi-life.co.jp/company/news/pdf/2018_008.pdf |
| Dai-ichi Life to Impact Invest in MELTIN MMI - Mitigating Accidents Caused by Work in Hazardous Environments by MELTIN's Avatar Robots - | Oct. 17, 2018 | https://www.dai-ichi-life.co.jp/english/news_release/2018/pdf/index_004.pdf |
| Dai-ichi Life to Impact Invest in MOLCURE Inc. - Shortening Pharmaceutical Development through the World's First Antibody Discovery Platform Utilizing AI - | Nov. 27, 2018 | https://www.dai-ichi-life.co.jp/english/news_release/2018/pdf/index_007.pdf |

| | | |
|--|---------------|---|
| Dai-ichi Life to Impact Invest in QD Laser, Inc. - World's First Eyewear that Employs State-of-the-Art Laser Technology Improves Quality of Life for Low-Vision Patients - | Dec. 12, 2018 | https://www.dai-ichi-life.co.jp/english/news_release/2018/pdf/index_010.pdf |
| Dai-ichi Life to Impact Invest in Challengery Inc. - Helping to reduce CO ₂ emissions using the world's first wind turbine capable of generating electricity even in typhoons - | Feb. 28, 2019 | https://www.dai-ichi-life.co.jp/english/news_release/2018/pdf/index_012.pdf |
| Dai-ichi Life to Impact Invest in Venture Fund managed by Energy & Environment Investment, Inc. - Japan's Only Independent Venture Capital Focused on the Energy and Resource Related Sectors - | Mar. 20, 2019 | https://www.dai-ichi-life.co.jp/english/news_release/2018/pdf/index_015.pdf |
| Impact Investment in CureApp and NeuroTrack - Extending healthy life expectancy and improve quality of life through synergies between investments and life insurance- | July 5, 2019 | https://www.dai-ichi-life.co.jp/english/news_release/2019/pdf/index_008.pdf |
| Dai-ichi Life to Impact Invest in Integral Geometry Science - Contributing to a reduction in breast cancer deaths through the world's first high precision breast cancer visualizing system - | Sep. 13, 2019 | https://www.dai-ichi-life.co.jp/english/news_release/2019/pdf/index_015.pdf |
| Dai-ichi Life to Impact Invest in UniFa - Contributing to Resolving the Lengthy Daycare Waiting List Problem Caused by a Shortage of Nursery Care Workers by Introducing IoT and AI to Daycare Operations - | Sep. 27, 2019 | https://www.dai-ichi-life.co.jp/english/news_release/2019/pdf/index_014.pdf |
| Dai-ichi Life to Impact Invest in Life is Tech, Inc. - Contributing to Solving the IT Talent Shortage with IT and Programming Education Services - | Nov. 15, 2019 | https://www.dai-ichi-life.co.jp/english/news_release/2019/pdf/index_018.pdf |
| Dai-ichi Life to Impact Invest in World's First Anti-Smoking Social Impact Bond - Support Social Impact Creator and Investment Recipient CureApp, through Investment in Anti-Smoking Project - | Nov. 29, 2019 | https://www.dai-ichi-life.co.jp/english/news_release/2019/pdf/index_021.pdf |
| Dai-ichi Life to Impact Invest in Modulus Discovery, Inc. - Contributing to Realizing Accessible Healthcare for All by Cutting Development Timelines and Costs of Pharmaceuticals - | May 13, 2020 | https://www.dai-ichi-life.co.jp/english/news_release/2020/pdf/index_003.pdf |
| Impact Investment in Metcela Inc. - Contributing to Extending Healthy Life Expectancy of Patients with Heart Failure through the Development and Provision of a New Treatment - | Jan. 4, 2021 | https://www.dai-ichi-life.co.jp/english/news_release/2020/pdf/index_017.pdf |
| Impact Investment in Sharing Energy Co., Ltd. - Contributing to CO ₂ emission reduction through distributed renewable energy power generation for residential solar power - | Feb. 15, 2021 | https://www.dai-ichi-life.co.jp/english/news_release/2020/pdf/index_021.pdf |
| Impact Investment in GITAI Japan - Contributing to Economic Growth through Promotion of Space Development by Means of R&D for Space Worker Robots - | March 1, 2021 | https://www.dai-ichi-life.co.jp/english/news_release/2020/pdf/index_024.pdf |